

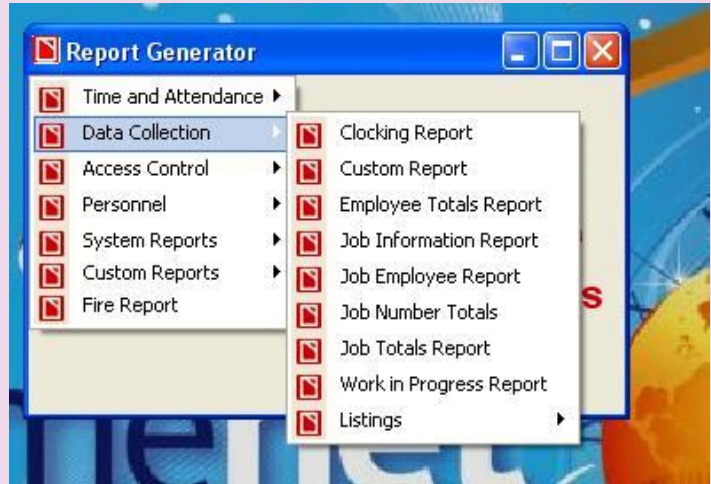
Timenet for Data Collection

Gathering information from the shop floor via timenet terminals whether it's from machines or employees.

TimeNet software together with one or more terminals permits management full control over information gathered with user definable prompts, fields and reporting.

TimeNet software comes complete with standard data collection reports, such as:

However standard reports at times may not meet your company's requirements, for this very reason TimeNet software has a specialized script program, to enable Job/Employee information to be displayed in many ways, hence Timenet will allow you to view or export the right information from the work place, whether its what the employee would like for lunch that day or had in the week or month (helps with a coin less environments) or what operations/sections the employee has been doing inside a selected job over any period.



How does Timenet work? Using TimeNet software, you set up the prompts/information needed to go to the shop floor whether it's a simple department change or a more detailed operation or job, once set up and given a job/information badge (if needed) employees input data via the shop floor data collection terminals installed around your company's premises.

Data can be entered in numerous ways e.g. swipe or proximity badges or bar-code readers or even the terminals own key-pad will allow employees to enter the details they are about to action. Timenet can automatically assign the next job (if set up to allow) or you can simply add and modify all operations so the employee is prompted at log-in to enter data. Tracking all data entered together with the employee start and stop times Timenet allows information to be viewed edited and reports taken or exported to other programs.

Flash the badge in front of the reader or scan the bar-code for the terminal to confirm transaction and prompt the employee to clock on using their own attendance card/proximity fob, if you're company has a Time & Attendance system in operation it can be the same card/fob. If the employee has not clocked in when they try to log data the system will inform them that they have not clocked in, this improves the efficiency of health and safety with regards to tracking employees in the event of an emergency.

Information can be collected from the shop floor in varies ways:

Magnetic swipe card

Proximity cards or key fobs

Terminals own key pad

Bar-codes via laser pens/guns



Swipe & Proximity cards

Proximity Key Fobs

Terminal with Proximity Reader

Specification

Terminal:	Accnet low voltage terminal power requirements 9-15 VDC 200 mA	
Dimensions:	150 mm (W) x 110 mm (H) x 40 mm (D)	
Weight:	300g	
Cabling:	All cable entry to terminals is from below units	
Data Cable:	When connected to Timenet system 2 pair twin twisted screened or cat5 screened	
Environment:	Temperature 0°-40°C	Humidity: 15%-90% Non-Condensing (Optional IP56 sealing)



timerecorders.co.uk

"Systems in time"



01353 778518